

## Market Review:

Indian market benchmarks closed with modest losses today as investors adopted a cautious stance ahead of India's GDP data release. Metal, IT, and auto stocks came under pressure, while banking stocks provided some support with decent gains. The S&P BSE Sensex declined 182.01 points or 0.22% to 81,451.01. The Nifty 50 index shed 82.90 points or 0.33% to 24,750.70.

## Nifty Technical Outlook

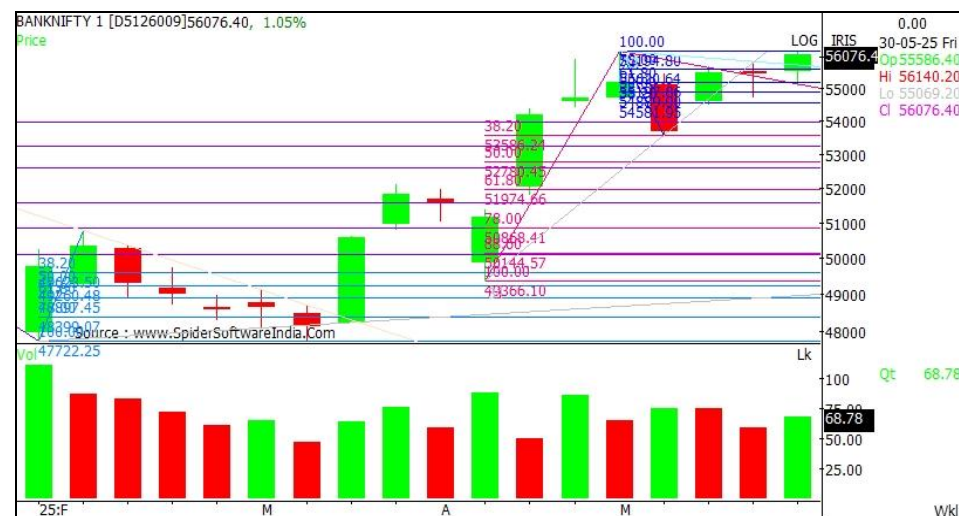
Nifty is expected to open on a flattish note and likely to witness range bound move during the day. On technical grounds, Nifty has an immediate support at 24670. If Nifty closes below that, further downside can be expected towards 24600-24540 mark. On the flip side 24800-24870 will act as strong resistance levels.

**Action: Nifty has an immediate Support placed at 24670 and on a decisive close below expect a fall to 24600-24540 levels.**



## Bank Nifty

Bank Nifty's next immediate support is around 55800 levels on the downside and on a decisive close below expect a fall to 55540-55300. There is an immediate resistance at 56340-56600 levels.



### Stocks With Positive Bias

BANKBARODA, CUMMINSIND,  
ETERNAL

### Stocks With Negative Bias

ACC, BHEL, COLPAL

## Nifty 50 Stocks: SUPPORT / RESISTANCE LEVELS

Name	CLOSE	S2	S1	Pivot	R1	R2
<b>NIFTY</b>	<b>24750.70</b>	<b>24600</b>	<b>24670</b>	<b>24840</b>	<b>24800</b>	<b>24870</b>
<b>BANKNIFTY</b>	<b>56076</b>	<b>55540</b>	<b>55800</b>	<b>55760</b>	<b>56340</b>	<b>56600</b>
ADANIENT	2520	2482	2501	2533	2551	2583
ADANIPTS	1433	1411	1422	1440	1451	1468
APOLLOHOSP	6881	6770	6825	6909	6965	7049
ASIANPAINT	2259	2224	2241	2273	2290	2322
AXISBANK	1192	1178	1185	1197	1204	1216
BAJAJ-AUTO	8607	8406	8506	8686	8786	8966
BAJAJFINSV	2017	1999	2008	2020	2029	2041
BAJFINANCE	9181	9086	9133	9168	9216	9251
BHARTIARTL	1856	1831	1844	1855	1868	1879
CIPLA	1466	1439	1452	1471	1484	1503
COALINDIA	397	391	394	399	403	408
DIVISLAB	6612	6480	6546	6607	6673	6733
DRREDDY	1251	1233	1242	1250	1259	1267
EICHERMOT	5334	5269	5301	5352	5385	5436
ETERNAL	238	220	229	236	245	252
GRASIM	2546	2493	2520	2562	2588	2631
HCLTECH	1637	1605	1621	1643	1658	1680
HDFCBANK	1945	1916	1931	1940	1954	1963
HDFCLIFE	777	768	773	780	784	791
HEROMOTOCO	4309	4236	4272	4326	4363	4417
HINDALCO	634	620	627	639	646	658
HINDUNILVR	2348	2324	2336	2356	2368	2387
ICICIBANK	1446	1434	1440	1450	1456	1467
INDUSINDBK	817	804	811	817	824	830

Name	CLOSE	S2	S1	Pivot	R1	R2
INFY	1563	1546	1555	1563	1571	1580
ITC	418	415	416	418	420	422
JIOFIN	287	282	285	288	290	293
JSWSTEEL	994	977	985	999	1007	1021
KOTAKBANK	2075	2052	2063	2077	2088	2102
LT	3675	3634	3655	3675	3695	3716
LTIM	5069	4979	5024	5092	5137	5205
M&M	2977	2923	2950	2984	3010	3044
MARUTI	12319	12114	12217	12353	12456	12592
NESTLEIND	2396	2348	2372	2415	2439	2481
NTPC	334	328	331	336	339	344
ONGC	239	235	237	241	243	247
POWERGRID	290	284	287	291	294	297
RELIANCE	1421	1400	1410	1420	1431	1441
SBILIFE	1812	1788	1800	1817	1829	1846
SBIN	812	785	798	806	820	828
SUNPHARMA	1678	1642	1660	1687	1704	1731
TATACONSUM	1106	1091	1099	1109	1117	1127
TATAMOTORS	720	704	712	720	728	736
TATASTEEL	161	158	160	162	163	165
TCS	3463	3421	3442	3474	3496	3528
TECHM	1574	1552	1563	1579	1590	1606
TITAN	3555	3504	3530	3567	3593	3630
ULTRACEMCO	11210	11090	11150	11230	11290	11370
UPL	628	611	619	627	635	643
WIPRO	250	247	248	250	251	252

Source: Nirmal Bang Research

## Technical Call Updates

Stock Name	Reco	Entry price	Targets	Stop Loss	Duration	Status
	(Buy/Sell)					
KCPSUGIND	Buy	39.3	44	37	1-2 Days	Open
CDSL	Buy	1465.4	1535	1430	1-2 Days	Open
TATASTEEL	Buy	162.7	178	156	1-2 Days	Open
BHARTIARTL	Buy	1861.7	1910	1840	1-2 Days	Open
DBREALTY	Buy	196.6	210	190	1-2 Days	Open

## FROM THE EQUITY TECHNICAL DESK:

**VIKAS SALUNKHE**  
Sr. AVP- TECHNICAL RESEARCH  
E-Mail: [vikas.salunkhe@nirmalbang.com](mailto:vikas.salunkhe@nirmalbang.com)  
Tel no: 6273-8254/8000

**SWATI HOTKAR**  
AVP- TECHNICAL RESEARCH  
E-Mail: [swati.hotkar@nirmalbang.com](mailto:swati.hotkar@nirmalbang.com)  
Tel no: 6273-8255/8000

## Disclosure:

Research Reports that are published by Nirmal Bang Securities Private Limited (hereinafter referred to as "NBSPL") are for private circulation only. NBSPL is a registered Research Analyst under SEBI (Research Analyst) Regulations, 2014 having Registration no. INH000001766. NBSPL is also a registered Stock Broker with National Stock Exchange of India Limited, BSE Limited, Metropolitan Stock Exchange of India Limited, Multi Commodity Exchange of India Limited and , National Commodity and Derivative Exchange Limited in Capital Market , Equity and Commodities derivatives segments and Currency Derivatives Segment .

NBSPL has other business divisions with independent research teams separated by Chinese walls, and therefore may, at times, have different or contrary views on stocks and markets.

NBSPL or its associates have not been debarred / suspended by SEBI or any other regulatory authority for accessing / dealing in securities Market since last 20 years. NBSPL, its associates or analyst or his relatives do not hold any financial interest (Except Investment) in the subject company. NBSPL or its associates or Analyst do not have any conflict or material conflict of interest at the time of publication of the research report with the subject company. NBSPL or its associates or Analyst or his relatives may or may not hold beneficial ownership of 1% or more in the subject company at the end of the month immediately preceding the date of publication of this research report.

NBSPL or its associates / analyst has not received any compensation / managed or co-managed public offering of securities of the company covered by Analyst during the past twelve months. NBSPL or its associates have not received any compensation or other benefits from the company covered by Analyst or third party in connection with the research report. Analyst has not served as an officer, director or employee of Subject Company. NBSPL / analyst has not been engaged in market making activity of the subject company.

**Analyst Certification:** The research analysts and authors of these reports, hereby certify that the views expressed in this research report accurately reflects my/our personal views about the subject securities, issuers, products, sectors or industries. It is also certified that no part of the compensation of the analyst(s) was, is, or will be directly or indirectly related to the inclusion of specific recommendations or views in this research. The analyst(s) principally responsible for the preparation of this research report and has taken reasonable care to achieve and maintain independence and objectivity in making any recommendation.



## Disclaimer:

The Research Report is for the personal information of the authorized recipient and does not construe to be any investment, legal or taxation advice. NBSPL is not soliciting any action based upon it. Nothing in the research report shall be construed as a solicitation to buy or sell any security or product, or to engage in or refrain from engaging in any such transaction. In preparing the research report, we did not take into account the investment objectives, financial situation and particular needs of the reader.

The research report has been prepared for the general use of the clients of NBSPL and must not be copied, either in whole or in part, or distributed or redistributed to any other person in any form. If you are not the intended recipient you must not use or disclose the information in the research report in any way. Though disseminated to all the customers simultaneously, not all customers may receive the research report at the same time. NBSPL will not treat recipients as customers by virtue of their receiving the research report. The research report is not directed or intended for distribution to or use by any person or entity resident in a state, country or any jurisdiction, where such distribution, publication, availability or use would be contrary to law, regulation or which would subject NBSPL & its group companies to registration or licensing requirements within such jurisdictions.

The report is based on the information obtained from sources believed to be reliable, but we do not make any representation or warranty that it is accurate, complete or up-to-date and it should not be relied upon as such. We accept no obligation to correct or update the information or opinions in it. NBSPL or any of its affiliates or employees shall not be in any way responsible for any loss or damage that may arise to any person from any inadvertent error in the information contained in the research report. NBSPL or any of its affiliates or employees do not provide, at any time, any express or implied warranty of any kind, regarding any matter pertaining to this report, including without limitation the implied warranties of merchantability, fitness for a particular purpose, and non-infringement. The recipients of the research report should rely on their own investigations.

This information is subject to change without any prior notice. NBSPL reserves its absolute discretion and right to make or refrain from making modifications and alterations to this statement from time to time. Nevertheless, NBSPL is committed to providing independent and transparent recommendations to its clients, and would be happy to provide information in response to specific client queries.

Before making an investment decision on the basis of research report, the reader needs to consider, with or without the assistance of an adviser, whether the advice is appropriate in light of their particular investment needs, objectives and financial circumstances. There are risks involved in securities trading. The price of securities can and does fluctuate, and an individual security may even become valueless. International investors are reminded of the additional risks inherent in international investments, such as currency fluctuations and international stock market or economic conditions, which may adversely affect the value of the investment. Opinions expressed are subject to change without any notice. Neither the company nor the director or the employees of NBSPL accept any liability whatsoever for any direct, indirect, consequential or other loss arising from any use of the research report and/or further communication in relation to the research report. Here it may be noted that neither NBSPL, nor its directors, employees, agents or representatives shall be liable for any damages whether direct or indirect, incidental, special or consequential including lost revenue or lost profit that may arise from or in connection with the use of the information contained in the research report.

Copyright of this document vests exclusively with NBSPL. Our reports are also available on our website [www.nirmalbang.com](http://www.nirmalbang.com)

Registration granted by SEBI and certification from NISM in no way guarantee performance of NBSPL or provide any assurance of returns to investors.

Nirmal Bang Research (Division of Nirmal Bang Securities Pvt. Ltd.)

B-2, 301/302, Marathon Innova,  
Opp. Peninsula Corporate Park  
Off. Ganpatrao Kadam Marg  
Lower Parel (W), Mumbai-400013  
Board No. : 91 22 6723 8000/8001  
Fax. : 022 6723 8010